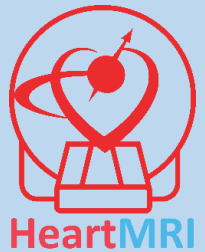


Valvular Heart Disease



Images from an MRI can help your doctor understand if there are issues with your heart

SYMPTOMS AND DESCRIPTION

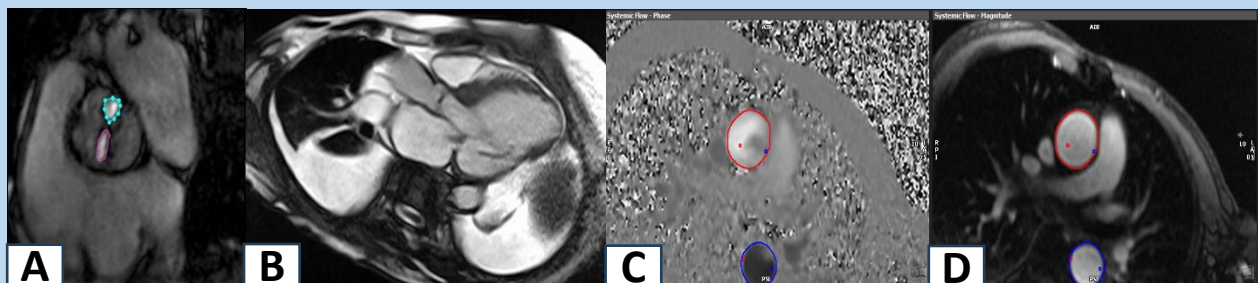
Symptoms include: Dizziness, skipped beats, fainting spells, chest pain, and shortness of breath.

Description: This disease is caused by abnormal opening and closing of the heart valves. This can be due to weakened and damaged heart muscle, abnormalities to the heart valves, or abnormal structures inside the heart.

WHY MRI

Heart MRI accurately measures the amount of blood flow across the heart valves and can tell if there is increased tightness or leakiness. Depending on severity and how the other chambers are affected, your doctor may need to refer you for surgery or other non-surgical procedures involving catheters.

IMAGES



A: Congenital bicuspid aortic valve; B: mitral regurgitation. C and D: aortic regurgitation.

Ask your doctor about:
Cardiac MRI without contrast with flow
quantification

*Images provided courtesy of: Kana Fujikura, MD, MPH.
Created by: Kana Fujikura, MD, MPH and Kanae Mukai, MD.*